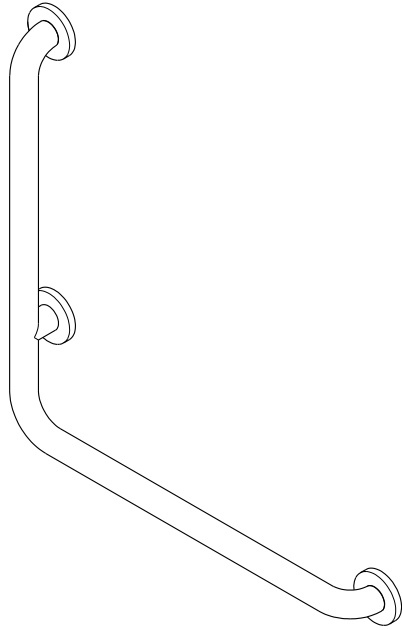
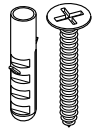


## L Shape Grab Bar Installation



### Parts:

Mounting  
Screw  
& Anchor



8 Pcs

### Before you begin your installation:

1. A grab bar is only as good as the way it's installed.
2. Make sure to confirm that there is proper wood backing at all three points of attachment for this grab bar.
3. If there is no wood backing available at all three points, attach a 2" x 6" minimum piece of lumber between the studs.
4. Maximum weight capacity is 330 LBS.

[www.kingstonbrass.com](http://www.kingstonbrass.com)

TOLL-FREE CUSTOMER SERVICE: 1-877-2-KBRASS

TECHNICAL SUPPORT E-mail: [service@kingstonbrass.com](mailto:service@kingstonbrass.com)

12775 Reservoir Street, Chino, CA91710

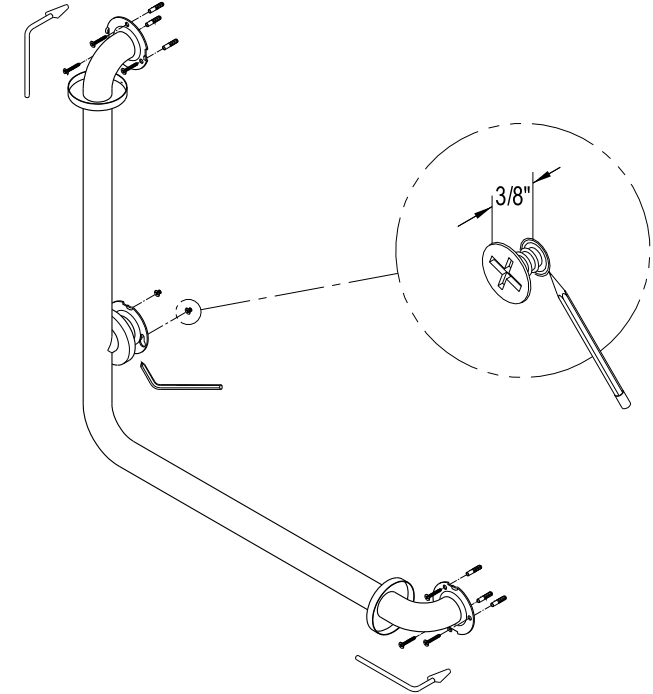
## TOOLS REQUIRED

 L shaped Phillips Screwdriver

 Phillips Screwdriver

 Marking Pencil

 Power Drill



### Installation Steps:

- Step 1. Place the grab bar at the desired location and mark the location of the holes, the middle flange is equipped with keyhole style holes, make sure to mark those at the narrow part of the hole.
- Step 2. Drill holes at all the locations where the screws will be located.
- Step 3. Insert only the screws for the center flange, leaving a gap of approximately 3/8".
- Step 4. Place grab bar at the desired location, insert middle plate of grab bar through the wider part of the keyhole shaped holes, until all 2 screws are fully inside the narrow part of the hole.
- Step 5. Tighten screws using the enclosed "L" shaped Phillips screwdriver, align the tabs on the flange with the notches on the base plate, push flange and turn on a clockwise direction.
- Step 6. Secure grab bar by fully threading all 6 screws at both ends.

### Cleaning

Clean with a damp cloth only.  
Avoid using metal or abrasive polishes.